

4202870 - 600 Series Grille Hardware Package

CONTAINS:

<u>QUANTITY</u>	<u>DESCRIPTION</u>
2	Grille Spring
2	Screws, #8-15 x 3/4" PH Truss HD
3	Screws, #8 x 1-3/4" Flat PH Head
2	Screw Grommets
1	Instructions

PROCEDURE:

If removing a grille, see grille removal procedures on this page.
If grille is already removed, go to page 2.

Standard Louvered Grille / Stainless Steel Grille Removal:

1. Open unit door(s) and extract three grille screws which pass up through top main frame extrusion into brackets at bottom rear of grille assembly (See Figure 1).
2. Tilt top of grille forward and release grille spring(s) from grille hook(s) at back side of grille (See Figure 1).
3. Lift grille assembly off (See Figure 1).

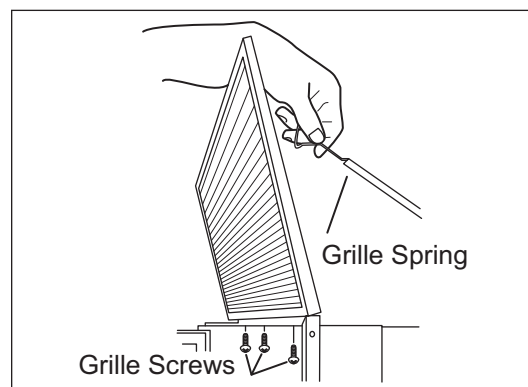


Figure 1

Panel Grille Removal:

NOTE: The panel grille assembly consists of an outer and inner grille frame. The inner grille frame accepts the decorative panel. The outer grille frame attaches to unit. Pegs on back side of inner grille frame fit into keyhole slots in the outer grille frame.

To Remove Inner Grille Frame: (See Figure 2)

1. Lift up and pull out of key-hole slots at bottom.
2. Pull down.
3. Pull out of key-hole slots at top.

To Remove Outer Grille Frame: (See Figure 3)

4. Open unit door(s) and extract three grille screws which pass up through mainframe extrusion into bottom extrusion of outer grille frame.
5. Extract screws at top front of outer grille frame and lift frame off.

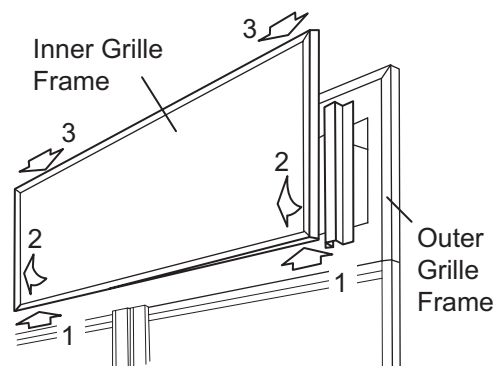


Figure 2

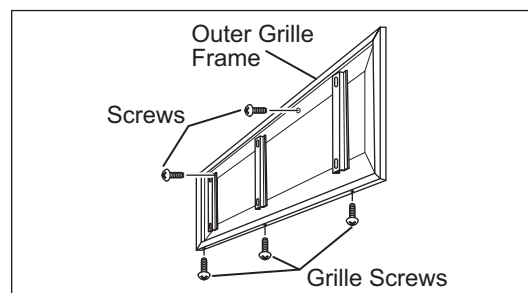


Figure 3



Standard Louvered Grille / Stainless Steel Grille Installation:

NOTE: Installation procedures for standard louvered grille and stainless steel grille are the same.

1. Using existing screws in compressor area, attach grille spring(s) to unit.
2. Place grille assembly on top main frame and hook grille spring(s) to grille hook(s) (See Figure 4).
3. Open unit door(s) and insert three #8 x 1-1/4" flat head screws up through main frame, into grille bracket (See Figure 4).

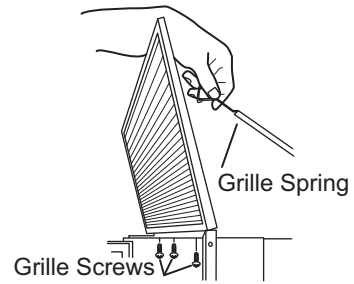


Figure 4

Panel Grille Installation:

NOTE: The panel grille assembly consists of an outer and inner grille frame (which accept decorative panels). The outer grille frame attaches to unit, and pegs on back side of inner grille frame which fit in keyhole slots in outer grille frame.

To Attach Outer Grille To Unit: (See Figures 5 & 6)

1. Install screw grommets into proper square holes in compressor shroud.
2. Place outer grille frame on top main frame. Then, insert truss head screws through grille frame and into screw grommets.
3. Open unit door(s) and insert three #8 x 1-1/4" flat head screws up through main frame, into outer grille bracket.

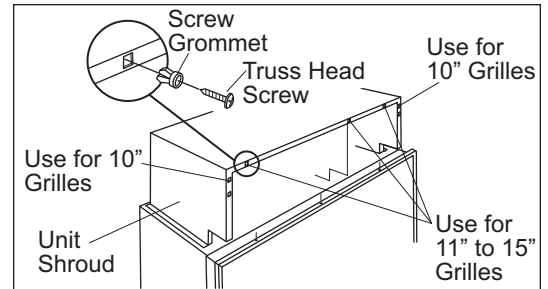


Figure 5

Install Panel Into Inner Grille Frame: (See Figures 7)

4. Remove top two corner screws from inner grille frame, and lift top of frame off.
5. Slide grille panel into grille frame. If panel is less than 1/4" thick, install chipboard filler panels behind panel.
6. Reinstall top of frame, reusing top two corner screws.

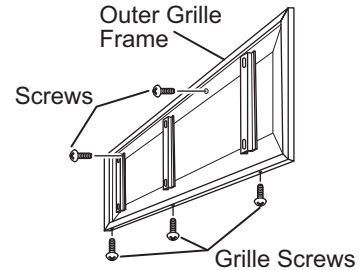


Figure 6

To Attach Inner Grille Frame To Outer Grille Frame: (See Figure 8)

7. Place top pegs of inner grille frame into top keyhole slots and push up.
8. Push bottom pegs into bottom keyhole slots.
9. Pull inner grille assembly down to lock into position.

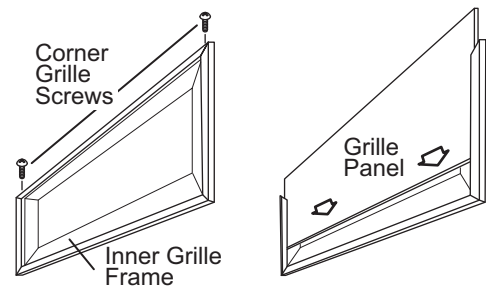


Figure 7

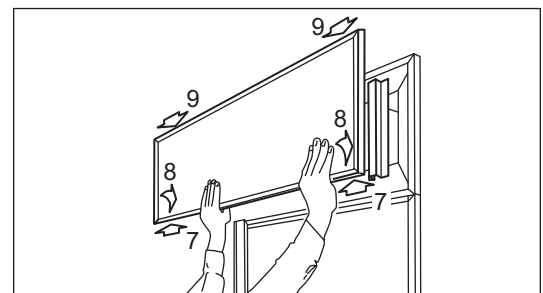


Figure 8

